

## Sink Quadra R12

Kitchen Sinks

Code: 1717 050



### DETAILS

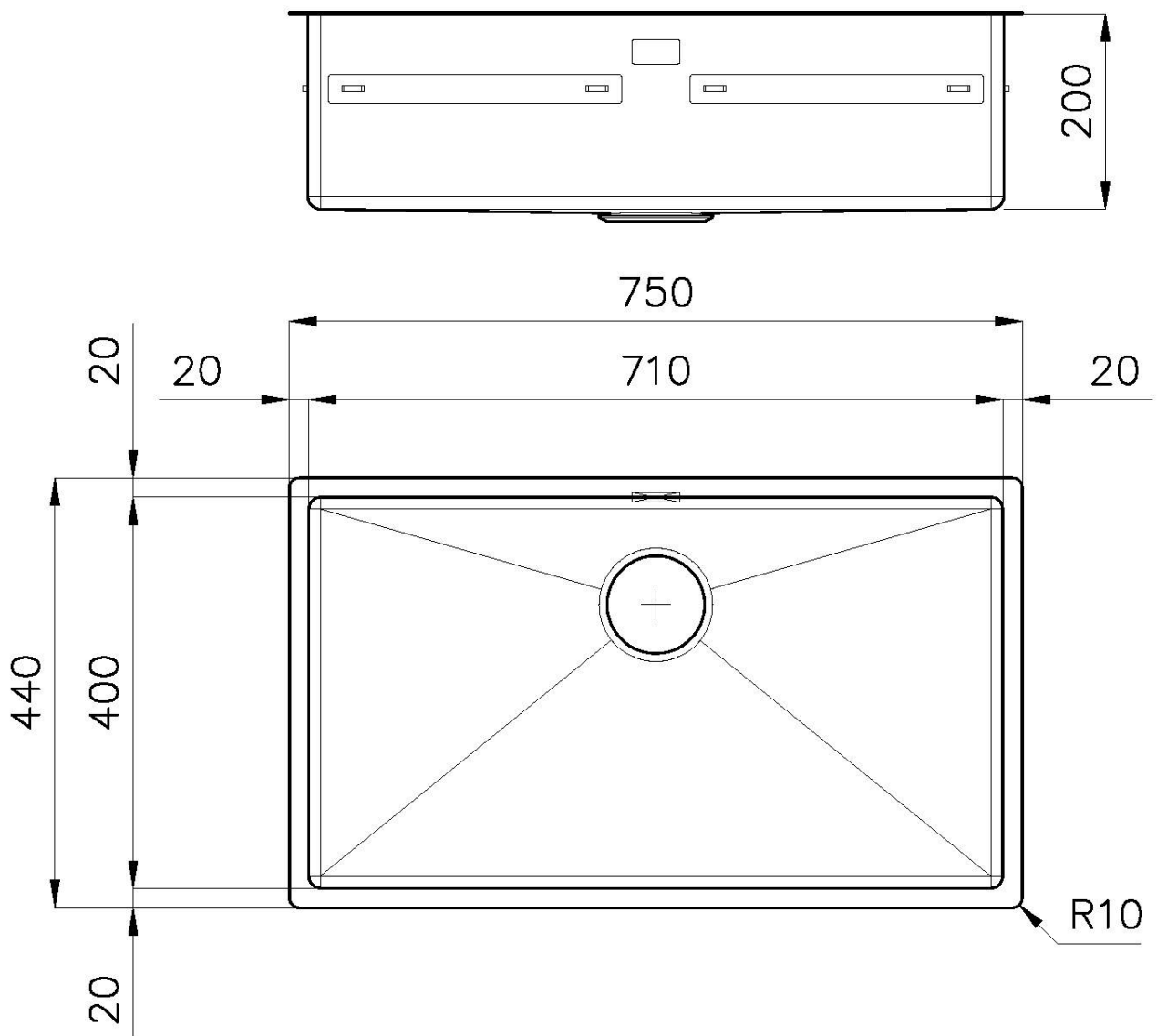
|                        |   |
|------------------------|---|
| Material               | AISI 304 stainless steel                  |
| Texture                | Brushed in line                           |
| Finish                 | Foster brushed                            |
| Edge/Installation Type | Flush-mount   Top-mount                   |
| Base                   | 80 cm                                     |
| Dimensions             | 750 x 440 mm                              |
| Bowl dimension         | 710 x 400 mm                              |
| Width                  | 75 cm                                     |
| Built-in hole          | <a href="#">View technical data sheet</a> |

|                   |   |
|-------------------|---|
| Number of bowls   | 1 bowl  |
| Standard fittings | Fixing hooks, gasket, drain, overflow and siphon, boxed packing |
| Drainer           | No  |
| Mixer holes       | No standard holes   |
| Waste fitting     | Drain SPACE 3,5"  |

## FEATURES

|                      |  |
|----------------------|--|
| Deep bowls           | This bowls reach an important depth, over 20 cm, thanks to the advanced production technology, that can be offer great capieny and practicity in all the washing operations.   |
| Diamond-shape bottom | The draining of water is an important feature in a sink, and it's always taken good care of in Foster products. In the bent-welded sinks, which would have a flat bottom, the proper draining is guaranteed by the elegant beveling, which helps the water flow. |
| High thickness       | 1mm thick steel. A significant thickness, which guarantees the maximum sturdiness and durability.  |
| Perimetral overflow  | The overflow is always a security on the Foster sinks that prevents the overflow of water in case of oversights. The perimeter drain solution improves aesthetics thanks to its square and essential shape.  |
| Small radius         | Bowls with squared shapes with a modern design and an increased capacity, for a minimal aesthetics connected with an extreme practicity.   |

## TECHNICAL DATA

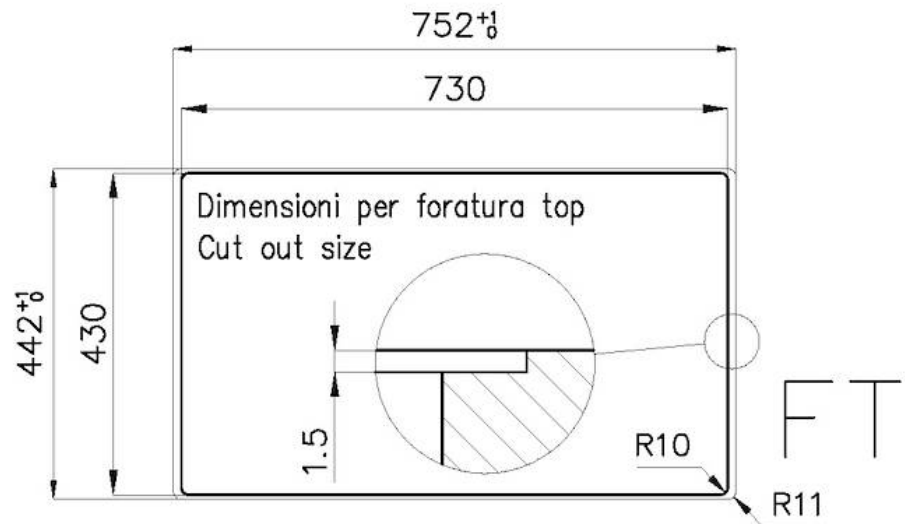




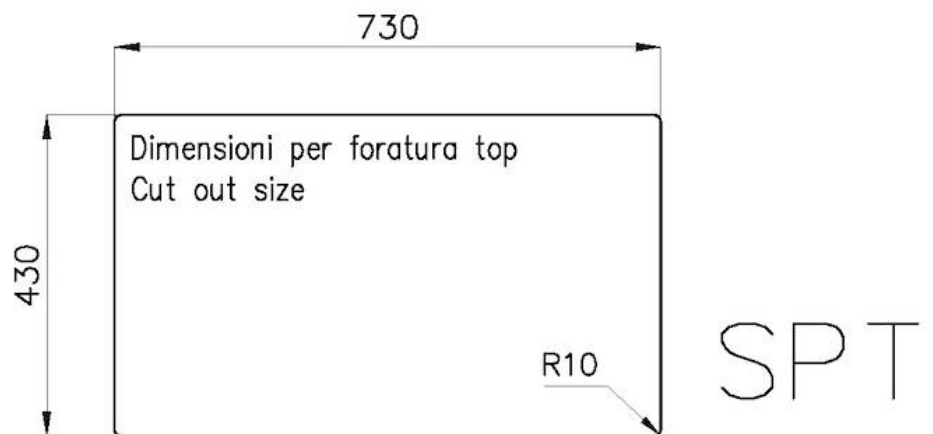
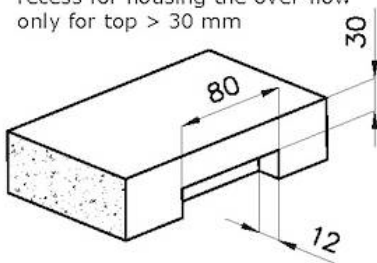
**8100 617**  
**POSIZIONATA A FILO VASCA / EDGE POSITIONING**



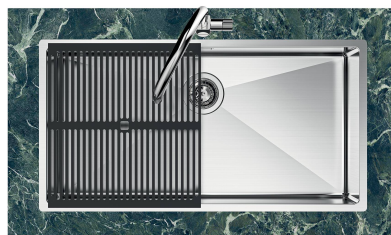
**8100 617**  
**POSIZIONATA SUL FONDO / BOTTOM POSITIONING**



intaglio per il troppo-pieno  
solo con top > 30 mm  
recess for housing the over-flow  
only for top > 30 mm



## GALLERY



## EQUIPMENT



**Black grid**  
8100 617

## OPTIONAL ACCESSORIES



**Glass chopping board**  
8631 300



**Graters kit with ring-holder and food collection tray**

8159 101

\* only in combination with the accessory  
8644 101



**HDPE Chopping board**  
8657 001



**HPDE Twin chopping board**  
8644 101



**Iroko-wood sliding chopping board with stainless steel colander**

8644 044



**Stainless steel perforated tray**

8151 000

\* only in combination with the accessory  
8644 101



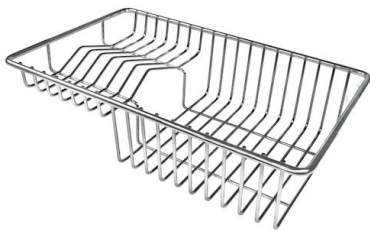
**Stainless steel perforated tray PVD  
Copper**  
8151 008



**Stainless steel perforated tray PVD  
Gold**  
8151 009

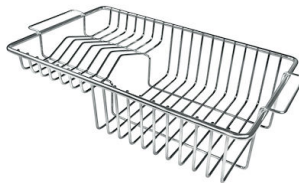


**Stainless steel perforated tray PVD  
Gun Metal**  
8151 006



**Stainless steel plate rack**  
8100 303

\* only in combination with the accessory  
8644 101



**Stainless steel plate rack**  
8100 201



**Stainless steel basket**  
8611 000



**White bowl**  
8153 100

## RECOMMENDED PAIRINGS



**Cooker hob KE**  
7602 032



**Cooker hob KE Induction**  
7386 646



**Mixer Tap Omega Plus**  
8497 020

## OPTIONAL AUTOMATIC WASTE FITTINGS



**Automatic waste fitting - PM**  
8407 113



**Space automatic waste fitting - PA**  
8407 108



**Space automatic waste fitting - PE**  
8407 109



**Space Light automatic waste fitting  
- PL**  
8407 117



**Space Push automatic waste fitting  
- PP**  
8407 116